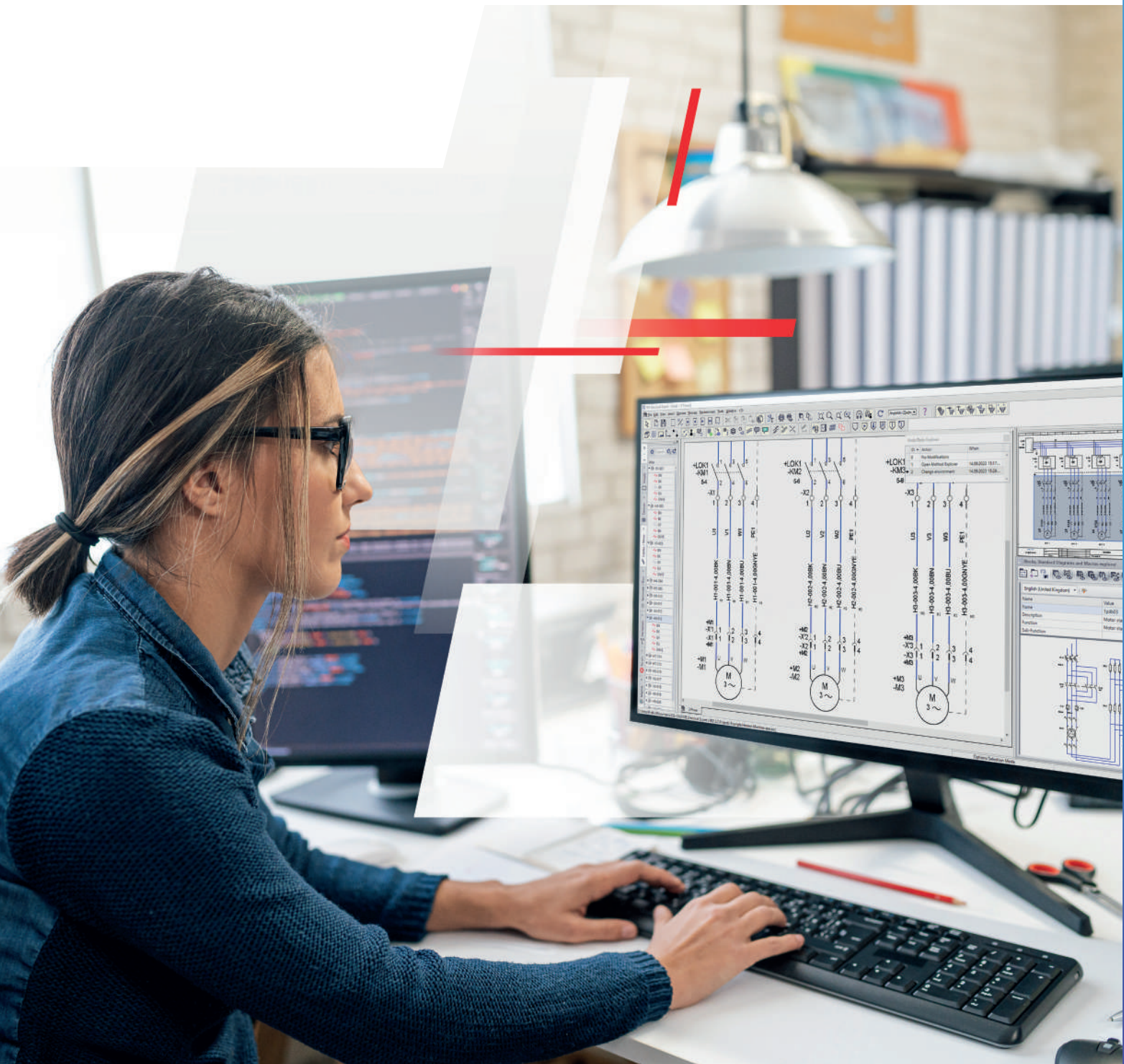




SEE Electrical Expert Subscription

# SEE Electrical Expert

Easy to use software for improved efficiency,  
improved productivity, and improved collaboration



# Summary

About ETAP <sup>®</sup> .....	03
About SEE Electrical Expert .....	05
Benefits of subscription .....	06
Overview of our new bundles.....	07
Feature Comparison Table .....	09



The leading sustainable enterprise platform for **electrical** design, simulation, engineering, and operations.

#### What we do

- We provide a comprehensive range of software, solutions and services to Design, Analyze, Engineer, Operate and Maintain electrical systems.
- Our offer enables a single source of truth for the entire Electrical Network through a multidimensional digital twin platform.

#### What makes us unique

- ETAP has the most comprehensive offer for ensuring electrical design and engineering consistency and seamless data flow across the project life cycle.
- Our unique model driven electrical digital twin positions us far ahead of the competition by providing design to operate capability with seamless data continuity.
- Our wide geographical presence enables us to serve the global market better than competition.

## Our commitments



### Safety

ETAP prioritizes safety by allowing engineers to simulate and analyze electrical power systems, helping identify potential risks, and ensuring compliance with safety standards.



### Sustainability

ETAP drives digital transformation for sustainability, supporting our customers in their energy transition, empowering them to make decisions for a green and smart future across the lifecycle.



### Reliability

ETAP is renowned for its reliability, providing accurate and consistent results in electrical system analysis and design. Engineers can trust its calculations and simulations to make informed decisions throughout the electrical project lifecycle from design to operation.



### Resilience

ETAP demonstrates resilience by efficiently handling complex power system models and recovering from errors or disruptions. It ensures the continued functionality and stability of electrical grids, even in challenging situations.



### Efficiency

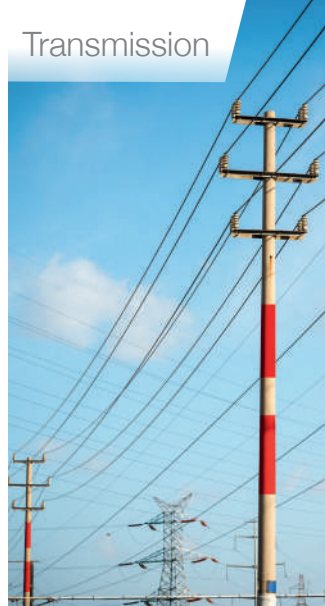
ETAP streamlines the process of designing and analyzing electrical systems, improving efficiency in engineering workflows. It reduces the time and resources required with built in automation and collaboration tools. It also enables engineers to optimize system performance and make cost-effective decisions.

# Supporting a diverse range of business sectors across the global energy landscape

Generation



Transmission



Renewable



Transportation



Industrial



Commercial



Distribution



Data Centers



# SEE Electrical Expert

Easy to use software for improved efficiency, improved productivity, and improved collaboration.

## Overview of the product

SEE Electrical Expert is an intuitive Electrical CAD software which enables electrical professionals to design, document, and maintain complex electrical schematics.

## Customer challenges

- Lack of documentation available on demand
- Time wasted on repetitive tasks and creating documentation
- Code compliance and safety regulations
- Difficulty communicating across the project lifecycle and loss of data
- Lack of customization and manufacturers catalogs

## Benefits

### Improved Efficiency:

- Streamlining the electrical design process, reducing errors, and saving time.

### Improved Productivity:

- Perform detailed schematics tasks, automate project generation, and manage options and variants of your design.

### Improved Collaboration:

- Easily generate your completed documentation and seamlessly collaborate with stakeholders.



# Benefits of moving to the new subscription bundles



## Increased flexibility & scalability

Adjust the service to your business, whenever you need and wherever you expand.



## Faster Innovation cycles

Incorporate best practices, stay up to date and future-ready with early access to latest improvements and innovation, contribute to product development.



## Lower upfront cost & long-term pricing optimization

Predict and best manage your costs, preserve your investment with a lower cost of ownership, benefit from early bird cost advantages.



## Best in class technical support & customer success teams

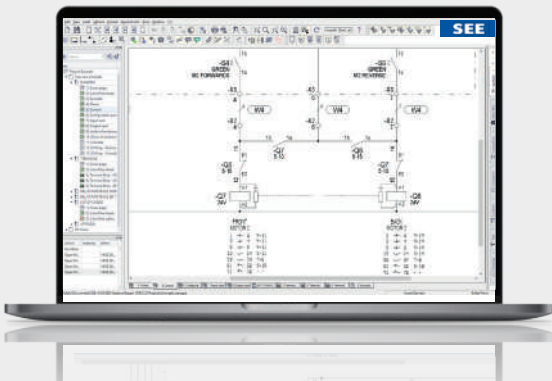
Leverage top notch technical assistance with remote desktop diagnostics from specialized dedicated teams as well as dedicated new customer success support, access exclusive onboarding material for smooth technology adoption.



## Simplified customer experience

Enjoy price stability over years, payment facility, online and offline user access, easier administration and uninterrupted service.

# Flexible options for your unique requirements



## Launch Bundle

Powerful Electrical CAD software designed to create demanding electrical designs, technical documentation and to configure the design process

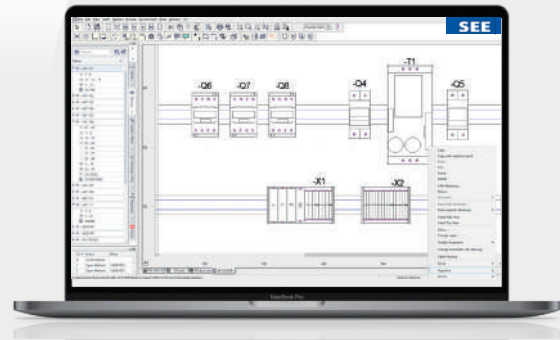
- Designed for small businesses with your needs in mind, enabling electrical engineers to efficiently design schematics, wiring, and terminal strips.

## Grow Bundle

Includes all **Launch** bundle features

Effective software for electrical professionals that enables the creation of detailed and specific electrical schematics, assembly documentation and panel layouts

- Electrical CAD software for electrical professionals offering advanced design capabilities, from 2D panels engineering through wire and cable management to PLC design, to streamline workflows and improve productivity.

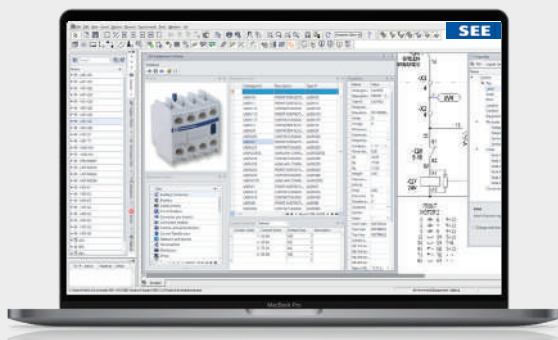


## Scale Bundle

Includes all **Launch & Grow** bundle features

Complex software to manage big extensive designing with variations, collaborate with different technical branches and set up best design processes across organizations

- Electrical CAD software designed to enhance collaboration and optimize workflow across the entire engineering process
- Enabling electrical professionals to connect people, processes, and data seamlessly
- Allowing cross-discipline collaboration for more efficiency design processes.



# + Available Add-Ons For Your Unique Needs

01.

## 3D Panel Design

Create a virtualized environment to gain a more spatial perspective within a cabinet design.

Quickly create, optimize, and anticipate issues within your design.

02.

## 3D Panel Manufacturing

Virtual enclosure wiring and optimal manufacturing integration.

Create precise documentation for your shop floor workers through all assembly.

03.

## Harness Manufacturing

It is a tool for designing 2D electrical harnesses based on schematic diagrams.

It is especially useful for manufacturers of multiple various types of electrical machines.

Design and produce logical and physical electrical harnesses.

04.

## Automatic Diagram Generation

Auto Generation of drawings from circuit macros with control over all texts.

Generate diagrams to speed up design.

05.

## Translation

Quickly translate your project into multiple languages.

Translation available for English, German, Italian, and Spanish.

06.

## SEE Web Catalog

Most complete online catalog in the market with over 1,000,000 references provided by over 900 manufacturers.

Includes more than 20,000 specific equipment symbols and growing.



# Features list

**Launch**
**Grow**
**Scale**

	Launch	Grow	Scale
Project management by location, by function, and by a subset	✓	✓	✓
Creating single and multi-line schematics with revisions, layers, hyperlinks and errors checking	✓	✓	✓
Automatic component tagging, wire numbering and cross-referencing	✓	✓	✓
Navigation between related components and signals	✓	✓	✓
Powerful search engine and fast editing with copy/paste and modify tools	✓	✓	✓
Cables insertion in schematic diagrams	✓	✓	✓
Intelligent equipment selection from the equipment catalogue (contact numbers, voltage, current...)	✓	✓	✓
Automatic generation of bill of material, equipment's, list of cables, wires with export to Excel	✓	✓	✓
Project electrical data explorer	✓	✓	✓
Mass electrical data editing	✓	✓	✓
Customizable professional environment with symbol creations, blocks, macros and methods	✓	✓	✓
Multiple symbol libraries (including IEC, NFPA) with graphical overview, grouping and searching	✓	✓	✓
Connectors and terminal strips management with terminal numbering, bridges, and cable selection	✓	✓	✓
CAD drawing facilities and dimensioning capabilities	✓	✓	✓
Bi-directional compatibility with other CAD systems (DWG, DXF, DXB, DWF and others)	✓	✓	✓
Importing and exporting of images	✓	✓	✓
Intelligent PDF export with searching and navigation	✓	✓	✓
Redlining functionality	✓	✓	✓
Function/Location Management	✓	✓	✓
CanecoBT and SE EPD Ecodial Connects. Single and multiline schematics automatic generation	✓	✓	✓
Exporting labels to various printer types	✓	✓	✓
PLC configuration management	○	✓	✓
Network and field bus management (deported I/O)	○	✓	✓
Automatic generation of racks and I/O card sheets	○	✓	✓
Direct import of PLC configuration from Schneider Electric, Siemens, Allen-Bradley and Excel	○	✓	✓
Separate management of wires and potentials	○	✓	✓
Advanced cabling management	○	✓	✓
Automatic wire creation and update	○	✓	✓
Automatic wiring connection according to cabling direction	○	✓	✓
Wiring diagrams for symbols	○	✓	✓
2D Panel editor with equipment placement, dimensioning and drilling layout	○	✓	✓
Navigation between panel layout and schematics	○	✓	✓
Synoptic cabling editor with creation of terminal strips, cables and connections on the drawings	○	✓	✓
MS SQL Server equipment database creation	○	✓	✓
Management of the working environments with merging, synchronization and differences detection	○	○	✓
"Local environment" updated according to a "Reference environment" stored on server	○	○	✓
Project object control according to the environment and schematics and data export filtering	○	○	✓
Multiple configuration management in a single project	○	○	✓
Parts list management with evaluation the differences between 2 editions	○	○	✓
Import of equipment list to the project, and import from SEE Web Catalogue by using excel sheet	○	○	✓
Validity tagging for symbol connections or connection points	○	○	✓
Hierarchical options/variants management	○	○	✓
Generic interface to communicate with PDM / PLM / ERP tools (PTC-Windchill, ARAS, SAP...)	○	○	✓
Enhanced interface providing the possibility to work with Solidworks PDM and Enovia Smarteam	○	○	✓
Data import/export for quick and easy editing of project data in MS Excel	○	○	✓

# How to choose the right Subscription Bundle

## 01. Assess

- Assess your business requirements
- Assess your budget
- Assess your future needs

## 02. Compare

- Compare features and functionalities
- Compare prices
- Compare scalability

## 03. Select

- Ask for a presentation
- Make the right choice

### Also available

#### SEE Electrical

SEE Electrical is an intuitive electrical CAD software for electrical professionals to easily design and document electrical schematics.

#### CANECO

CANECO is a comprehensive software solution for electrical professionals to efficiently design, complete calculations, and document electrical installations.

For more details,

Please follow this link

**etap**<sup>®</sup>

etap.com