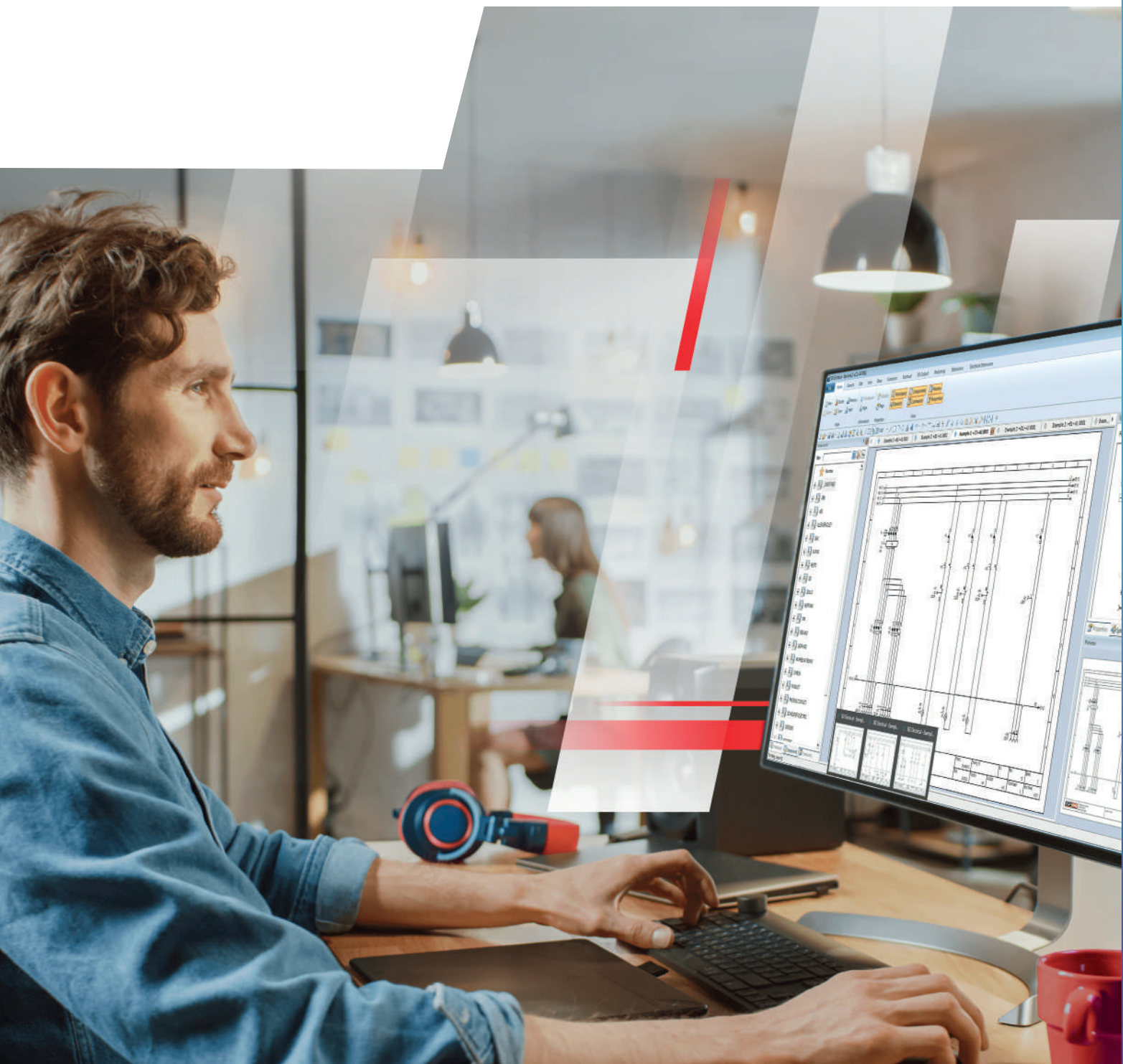




# SEE Electrical

Intuitive electrical CAD software for  
electrical professionals



# Summary

About ETAP® .....	03
About SEE Electrical.....	05
Benefits of subscription .....	06
Overview of our new bundles.....	07
Feature Comparison Table .....	09

## The leading sustainable enterprise platform for **electrical** design, simulation, engineering, and operations.

### What we do

- We provide a comprehensive range of software, solutions and services to Design, Analyze, Engineer, Operate and Maintain electrical systems.
- Our offer enables a single source of truth for the entire Electrical Network through a multidimensional digital twin platform.

### What makes us unique

- ETAP has the most comprehensive offer for ensuring electrical design and engineering consistency and seamless data flow across the project life cycle.
- Our unique model driven electrical digital twin positions us far ahead of the competition by providing design to operate capability with seamless data continuity.
- Our wide geographical presence enables us to serve the global market better than competition.

## Our commitments



### Safety

ETAP prioritizes safety by allowing engineers to simulate and analyze electrical power systems, helping identify potential risks, and ensuring compliance with safety standards.



### Sustainability

ETAP drives digital transformation for sustainability, supporting our customers in their energy transition, empowering them to make decisions for a green and smart future across the lifecycle.



### Reliability

ETAP is renowned for its reliability, providing accurate and consistent results in electrical system analysis and design. Engineers can trust its calculations and simulations to make informed decisions throughout the electrical project lifecycle from design to operation.



### Resilience

ETAP demonstrates resilience by efficiently handling complex power system models and recovering from errors or disruptions. It ensures the continued functionality and stability of electrical grids, even in challenging situations.



### Efficiency

ETAP streamlines the process of designing and analyzing electrical systems, improving efficiency in engineering workflows. It reduces the time and resources required with built in automation and collaboration tools. It also enables engineers to optimize system performance and make cost-effective decisions.



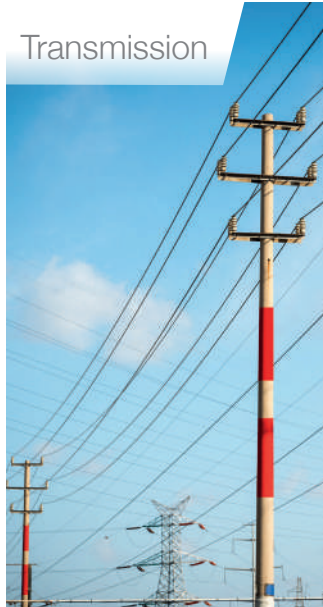
# Supporting a diverse range of business sectors

across the global energy landscape

Generation



Transmission



Renewable



Transportation



Industrial



Commercial



Distribution



Data Centers



# SEE Electrical

Intuitive electrical CAD software for electrical professionals

## Overview of the product

SEE Electrical is an intuitive electrical CAD software that enables electrical professionals to efficiently create, document, and optimize electrical schematics, improving productivity, design efficiency, and accuracy in every project.

## Customer challenges

- Lack of documentation and access to as-built drawings
- Minimizing errors while ensuring compliance and safety
- Time wasted on repetitive manual
- Customization for each project
- Collaboration across project stakeholders
- Cost constraints, lead time pressure, and accurate estimation

## Benefits

### Improved Documentation & Reporting

- Generate detailed documentation, including wiring diagrams, schematics, and bill of materials (BOMs) ensure quick reference to critical information.

### Improved Design Efficiency

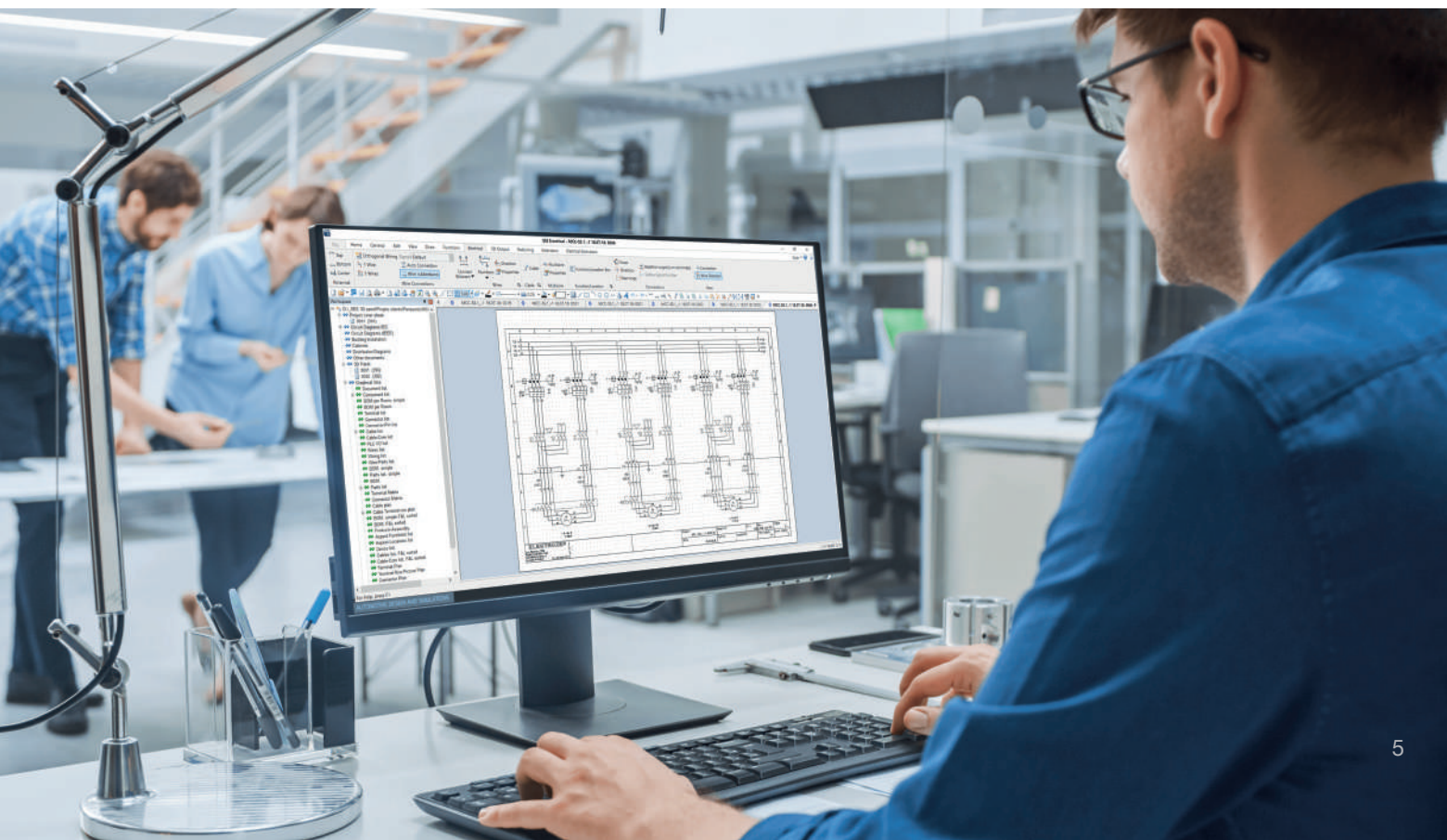
- Advanced design and drafting tools, automated repetitive tasks, libraries of symbols and components to streamline design.

### Improved Safety & Compliance

- Electrical systems are designed and documented with industry standards reducing errors and simplifying compliance.

### Improved Collaboration

- Easily generate your completed documentation, seamlessly collaborate with co-workers and business partners.





# Benefits of moving to the new subscription bundles



## Increased flexibility & scalability

Adjust the service to your business, whenever you need and wherever you expand.



## Faster Innovation cycles

Incorporate best practices, stay up to date and future-ready with early access to latest improvements and innovation, contribute to product development.



## Lower upfront cost & long-term pricing optimization

Predict and best manage your costs, preserve your investment with a lower cost of ownership, benefit from early bird cost advantages.



## Best in class technical support & customer success teams

Leverage top notch technical assistance with remote desktop diagnostics from specialized dedicated teams as well as dedicated new customer success support, access exclusive onboarding material for smooth technology adoption.



## Simplified customer experience

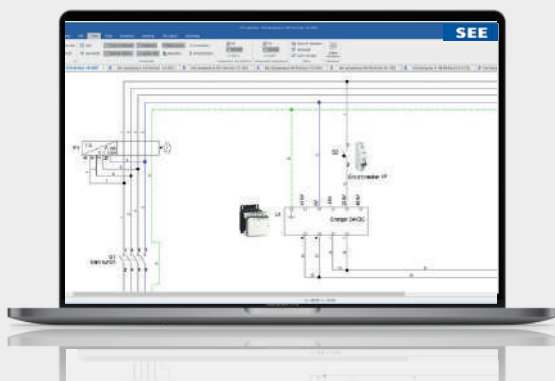
Enjoy price stability over years, payment facility, online and offline user access, easier administration and uninterrupted service.

# Flexible options for your unique requirements

## Launch Bundle

Easy-to-use software for creating efficient electrical schematics and wiring

- Designed for small businesses with your needs in mind
- Ensure a smooth learning curve
- Provide all the essential tools required to excel from day one

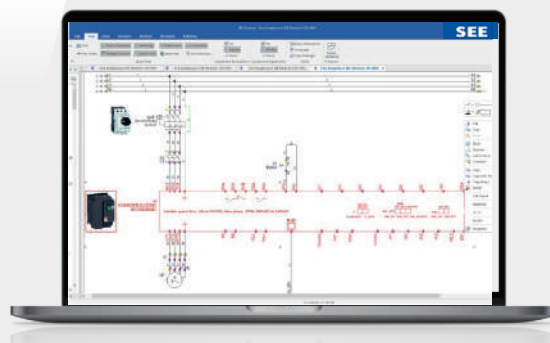


## Grow Bundle

Includes all **Launch** bundle features

Intuitive software for creating detailed electrical schematics and 2D cabinets

- Developed for the needs of designers who frequently produce and revise electrical documentation.

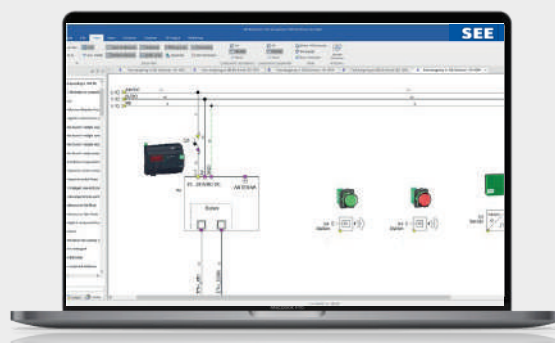


## Scale Bundle

Includes all **Launch** & **Grow** bundle features

Top-level software for creating complex electrical schematics, panel layouts, and set up design processes across organizations

- Powerful and feature-rich bundle designed to meet the demands of industry leaders.
- Elevate your electrical design capabilities to unmatched levels of efficiency and innovation.



# + Available Add-Ons For Your Unique Needs

01.

## 3D Panel Design

Create a virtualized environment to gain a more spatial perspective within a cabinet design.

Quickly create, optimize, and anticipate issues within your design.

02.

## 3D Panel Manufacturing

Virtual enclosure wiring and optimal manufacturing integration.

Create precise documentation for your shop floor workers through all assembly.

03.

## Building Implantation

Insert your electrical equipment onto the floorplan and automatically generate your single line diagrams in multiple standards.

Generate dedicated graphical lists to speed up the building installation assembly.

04.

## Automatic Diagram Generation

Auto Generation of drawing from circuit macros with control over all text.

05.

## Translation

Quickly translate your project into multiple languages.

Translation available for English, German, Italian, and Spanish.

06.

## SEE Web Catalog

Most complete online catalog in the market with over 1,000,000 references provided by over 900 manufacturers.

Includes more than 20,000 specific equipment symbols and growing.



# Features list

Launch

Grow

Scale

Single-line and multi-line diagram editor	⊗	⊗	⊗
Management of electrical diagrams	⊗	⊗	⊗
Project manager with Auto-backup feature and daily backup of the projects	⊗	⊗	⊗
Real-time lists for: components, terminals, cables, cable cores, wires, PLC I/Os, documents	⊗	⊗	⊗
Filtering/sorting into lists + storing the filter or sorting	⊗	⊗	⊗
Multiple symbol libraries (including IEC, NFPA) with graphical overview, grouping and searching	⊗	⊗	⊗
Creation of custom symbols and drawing macros	⊗	⊗	⊗
Real-time component numbering, generation of cable names and terminal numbers, and cross referencing	⊗	⊗	⊗
Real time referencing between contacts and coils	⊗	⊗	⊗
Locking of component names, terminals, and wire labels	⊗	⊗	⊗
Custom project template creation	⊗	⊗	⊗
Selection and edition of basic physical and electrical data from the attached equipment catalogue	⊗	⊗	⊗
Import/Export of CAD formatted data (DWG, DXF, DXB and DWF)	⊗	⊗	⊗
CanecoBT and SE EPD Ecodial interface. Auto generation of single and multi-line schematics	⊗	⊗	⊗
Importing of images such as JPG, BMP, PNG, TIF, GIF, PCX, PDF and others	⊗	⊗	⊗
Copying of symbol groups between projects	⊗	⊗	⊗
Working on multiple projects simultaneously	⊗	⊗	⊗
Customizable working environment	⊗	⊗	⊗
2D CAD drawing and dimensioning capabilities	⊗	⊗	⊗
Support for hyperlinks on graphics, exporting active project into web format	⊗	⊗	⊗
Redlining functionality	⊗	⊗	⊗
512 available layers	⊗	⊗	⊗
Symbol labelling with function and location	⊗	⊗	⊗
Export in Enhanced Metafile Format and picture files (JPG, BMP, PNG, TIF, GIF, PCX)	⊗	⊗	⊗
Exporting labels to various printer types	⊗	⊗	⊗
Intelligent PDF with navigation	⊗	⊗	⊗
Handling of multi-level terminals	⊗	⊗	⊗
Integrated equipment database with channel definition and association of symbol connection points	⊙	⊗	⊗
Function and location boxes	⊙	⊗	⊗
Import of manufacturer's data into equipment database in Microsoft Excel® format	⊙	⊗	⊗
Duplicate component name check	⊙	⊗	⊗
Support for filtering equipment with a suitable number of auxiliary contacts for coils and components	⊙	⊗	⊗
Contact mirror display for coils	⊙	⊗	⊗
Management of relay contacts with catalog code control	⊙	⊗	⊗
Automatic contact numbering of coils-and components with auxiliary contacts	⊙	⊗	⊗
Support of automatic renumbering the contacts	⊙	⊗	⊗
Checking coils and components for over use of auxiliary contacts	⊙	⊗	⊗
Completing components like coils, multilevel terminals, connectors, ...	⊙	⊗	⊗
Cable management (cable equipment database) and connector/pins management	⊙	⊗	⊗
PLC management	⊙	⊗	⊗
Organize diagrams in folder structures	⊙	⊗	⊗
Wire directions display and editing	⊙	⊗	⊗
User definable numbering method for all elements and references	⊙	⊗	⊗
Renumbering of entire terminal strips, renumbering of cables	⊙	⊗	⊗
Insertion of pages and deletion of pages gaps	⊙	⊗	⊗
Database editors (single entry editing)	⊙	⊗	⊗
Graphical signal management with predefined signal properties /wire numbering	⊙	⊗	⊗
Graphical terminal plan with automatic detection of up to 20 bridge types	⊙	⊗	⊗
Graphical cable plan including spare cores + wiring list	⊙	⊗	⊗
Enable duplicate wire numbering for different sub folders	⊙	⊗	⊗
Management of connectors	⊙	⊗	⊗
Find and replace text throughout entire project	⊙	⊗	⊗
Insert components/terminals into the project without a graphic	⊙	⊗	⊗
2D cabinet layout design synchronized with circuit diagram	⊙	⊗	⊗
Open Data modification of all project data in Excel	⊙	⊙	⊗
Auto Connection for wires	⊙	⊙	⊗
Draw orthogonal multi-pole wires	⊙	⊙	⊗
Wire flow direction control (important for wire and wiring list)	⊙	⊙	⊗
Variant definitions for circuit macros and whole pages	⊙	⊙	⊗
Cross-reference navigator (go to) with marking function (come from)	⊙	⊙	⊗
Navigation from Database and specific Graphical lists to drawings	⊙	⊙	⊗
Aspect manager for handling functions, locations & products, including ability to manage nested aspects	⊙	⊙	⊗
Configure project tree allowing for custom graphical and database lists	⊙	⊙	⊗
User defined lists and components	⊙	⊙	⊗
Configuration of multicore cables defined by a single wire	⊙	⊙	⊗
Changing of page templates for an entire project or a part of the project	⊙	⊙	⊗
Copy multiple pages and folders between projects	⊙	⊙	⊗
Advanced database editors (editing of several entries at once)	⊙	⊙	⊗
Terminal plan with graphics and terminal row picture plan	⊙	⊙	⊗
Cable terminal row plan	⊙	⊙	⊗
Connector matrix and plan	⊙	⊙	⊗
Product assembly list + Compressed BOM + Device list	⊙	⊙	⊗
Generate all necessary graphical lists in one shot	⊙	⊙	⊗
Database list/editor with texts from callouts: usable for revision management	⊙	⊙	⊗
Find and replace symbols from selected, current page or entire project	⊙	⊙	⊗
Powerful custom report generator	⊙	⊙	⊗
Project change report and environment manager tools for multi-user sites	⊙	⊙	⊗

# How to choose the right Subscription Bundle

## 01. Assess

- Assess your business requirements
- Assess your budget
- Assess your future needs

## 02. Compare

- Compare features and functionalities
- Compare prices
- Compare scalability

## 03. Select

- Get a demo
- Make the right choice

### Also available

#### SEE Electrical Expert

SEE Electrical Expert is an intuitive Electrical CAD software which enables electrical professionals to design, document, and maintain complex electrical schematics.

#### Caneco

Caneco is a comprehensive software solution for electrical professionals to efficiently design, complete calculations, and document electrical installations.

For more details about SEE Electrical

Please follow this link

# **etap**<sup>®</sup>

etap.com