

# CANECO IMPLAN

Software for **automated design**  
of 2D/3D **electrical plans**



**ALPI**  
smart electrical modeling solution

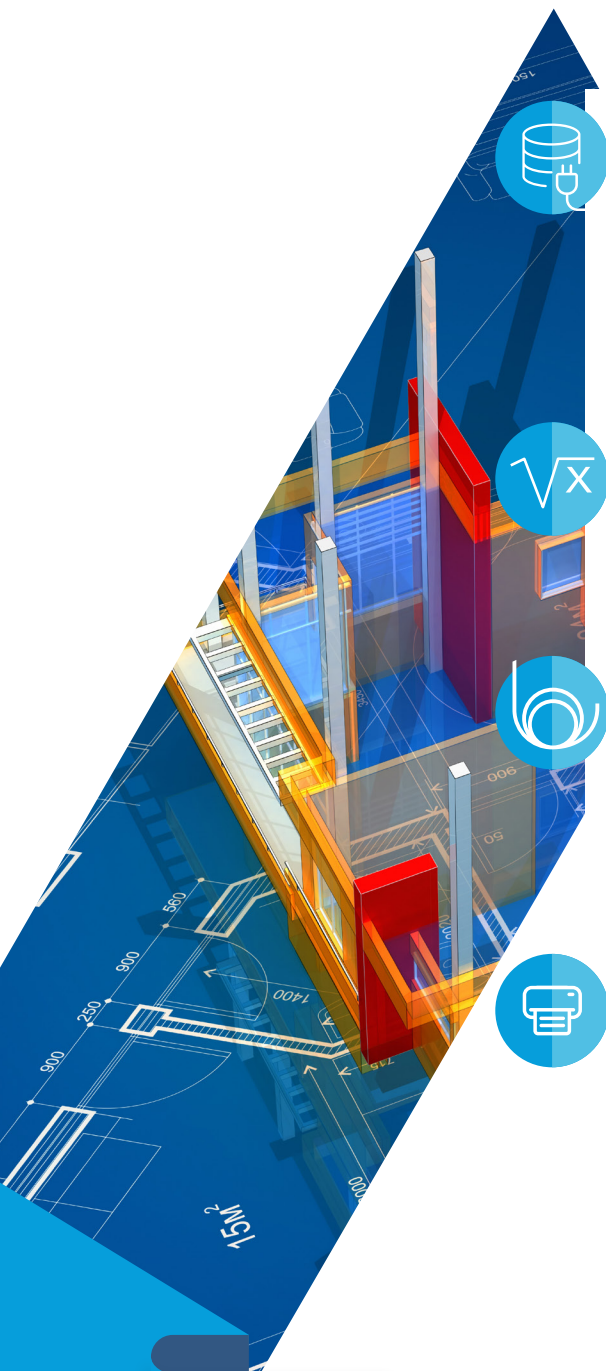


Part of the software suite  
**Caneco ONE**

# CANECO IMPLAN

## Automated design of 2D/3D electrical plans

Caneco Implantation is an AutoCAD® plugin that enables the implantation of electrical material in 2D or 3D, as well as automated cable routing.



### Implantation of electrical equipment

- Caneco Implantation integrates a Low Voltage (LV) and Extra Low Voltage (ELV) object library that comprises distribution boards and cabinets, lighting features, specific and general purpose sockets outlets, cable trays, etc.
- Caneco Implantation enables you to customize electrical equipment in the library and to add also symbols created in AutoCAD®.
- Caneco Implantation allows you to import lighting features installed in Dialux® after the illumination calculations have been completed.

### Sizing and calculations

- Caneco Implantation exports the created circuits to Caneco BT, which in turn calculates the cross-section of cables and also the protective devices. The results are then re-imported into Caneco Implantation.
- Caneco Implantation then optimizes the cable trays on the installation plan according to the previous calculations.

### Cable management

- Caneco Implantation enables the optimization of cable routing via junction boxes and cable trays.
- It configures the cable selection rules for the trays.
- It automatically produces cross-sectional views of your cable trays.

### Publication of project documentation

- Caneco Implantation enables you to edit all the documents of the project, i.e. nomenclatures for cables, terminal devices and cable trays, cable lists, cable schedules as well as lists of cable trays along with their cross section views.
- Caneco Implantation automatically generates the cabling synoptic for LV and ELV installations.

**Building Owner**

**Project Manager**

**Consultant**





## Advantages

### + Optimized work

- Generic, ready-to-use electrical library.
- Unique data entry.
- Data security.
- Integrity of the results.
- Improved design quality.
- Automated document production.
- Integrated design results.

### + A Comprehensive program

- Compatible with AutoCAD® and AutoCAD® MEP platforms.

### + Compliance with standards

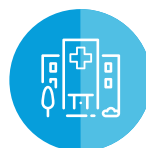
The cables and protective devices are calculated in accordance with the applicable standards, thanks to the interface with Caneco BT

Electrical  
Contractor

Control Authority

Maintenance Operator





## CUSTOMIZED SERVICES

- **Adapted** training on the software
- **Technical support** provided by specialists
- **Personalized support** for the installation and deployment of our solutions for your company



**ALPI**

1, boulevard Charles de Gaulle  
92707 Colombes Cedex - France

+33 1 47 52 97 27

infos@alpi.fr

www.alpi.fr