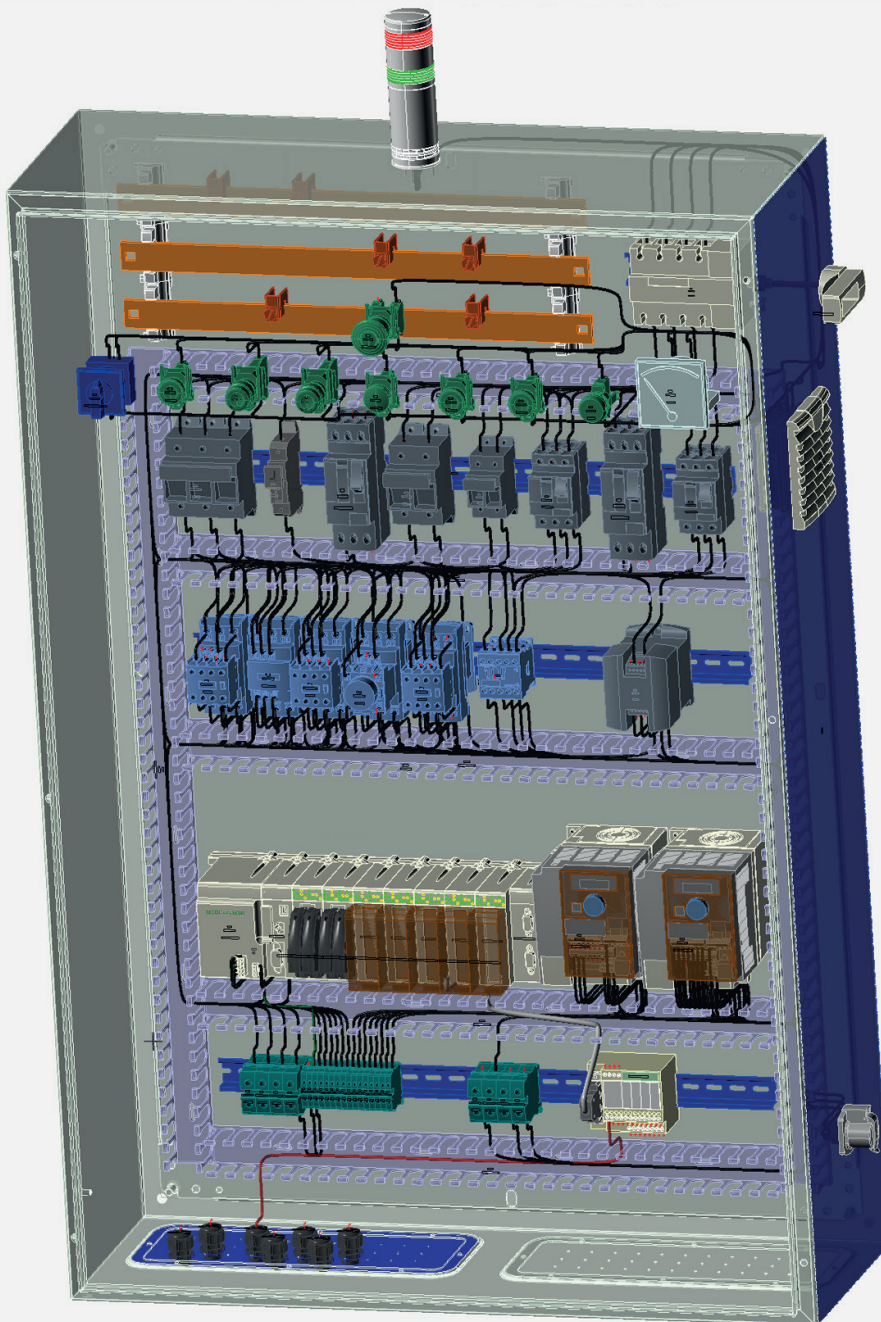




# SEE Electrical 3D Panel+

Simplify the installation and assembly of your cabinets



## With 3D Panel+:

- harness the power of 3D using a professional intuitive interface;
- automate panel mounting and assembly;
- reduce design, manufacturing and startup costs.

## Main Features:

- schematic and 3D panel design integration;
- simple 3D placement of all equipment, snap-to-rail or surface;
- collision detection;
- consistency check with schematic diagram;
- wire routing;
- optimal wire lengths calculation;
- Segregation;
- STEP AP203, STEP AP214 import and export;
- Component and wiring imports from other Electrical CAD vendors (Eplan, etc.) or from an Excel spreadsheet.

## Manufacturing support:

- DXF/DWG export (punching, drilling and cutting detail)
- Wire processing machine integration (Komax, Schleuniger...)
- Cutting center integration for ducts and rails
- CNC integration (Rittal, Steinhauer...)

**Also available as an add-on module for:**



**SEE Electrical**



**SEE Electrical Expert**